

Efficacy and safety of more intensive lowering of LDL cholesterol: a meta-analysis of data from 170,000 participants in 26 randomised trials

Lancet 2010; **376**: 1670–81

DOI:10.1016/S0140-6736(10)61350-5

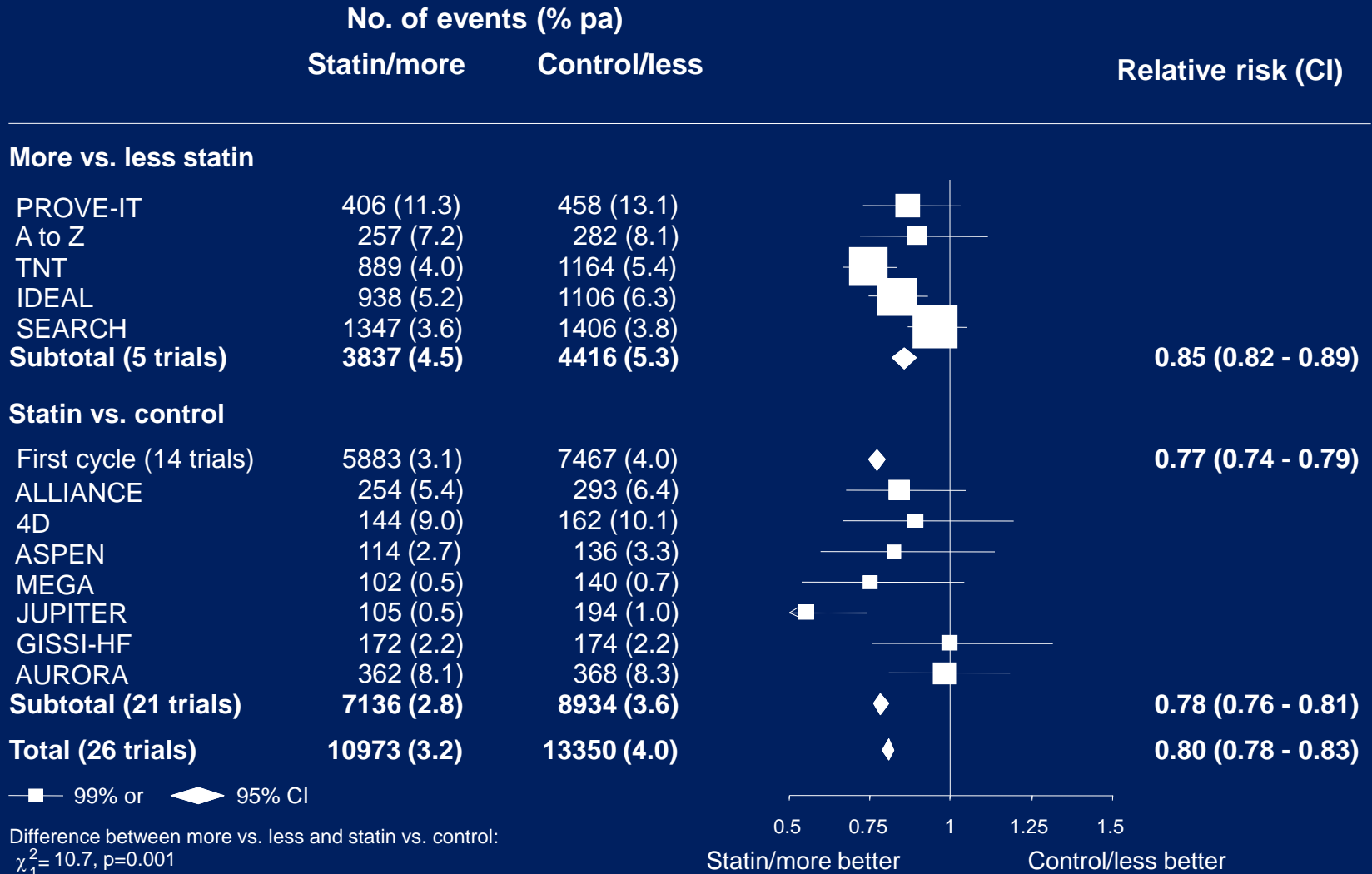
Second CTT cycle: more vs less intensive statin therapy

Study	Treatment comparison	N	Target population	Entry lipid criteria
PROVE-IT	A 80 vs. P 40	4162	ACS	TC \leq 240 mg/dL
A to Z	S 40 then S 80 vs. placebo then S 20	4497	ACS	TC \leq 250 mg/dL
TNT	A 80 vs. A 10	10,001	Prior CHD	LDL-C 130-250 mg/dL TG \leq 600 mg/dL
IDEAL	A 80 vs. S 20-40	8888	Prior CHD	TG \leq 600 mg/dL
SEARCH	S 80 vs. S 20	12,064	Prior CHD	TC \geq 4.5 mmol/L or \geq 3.5 if on statins

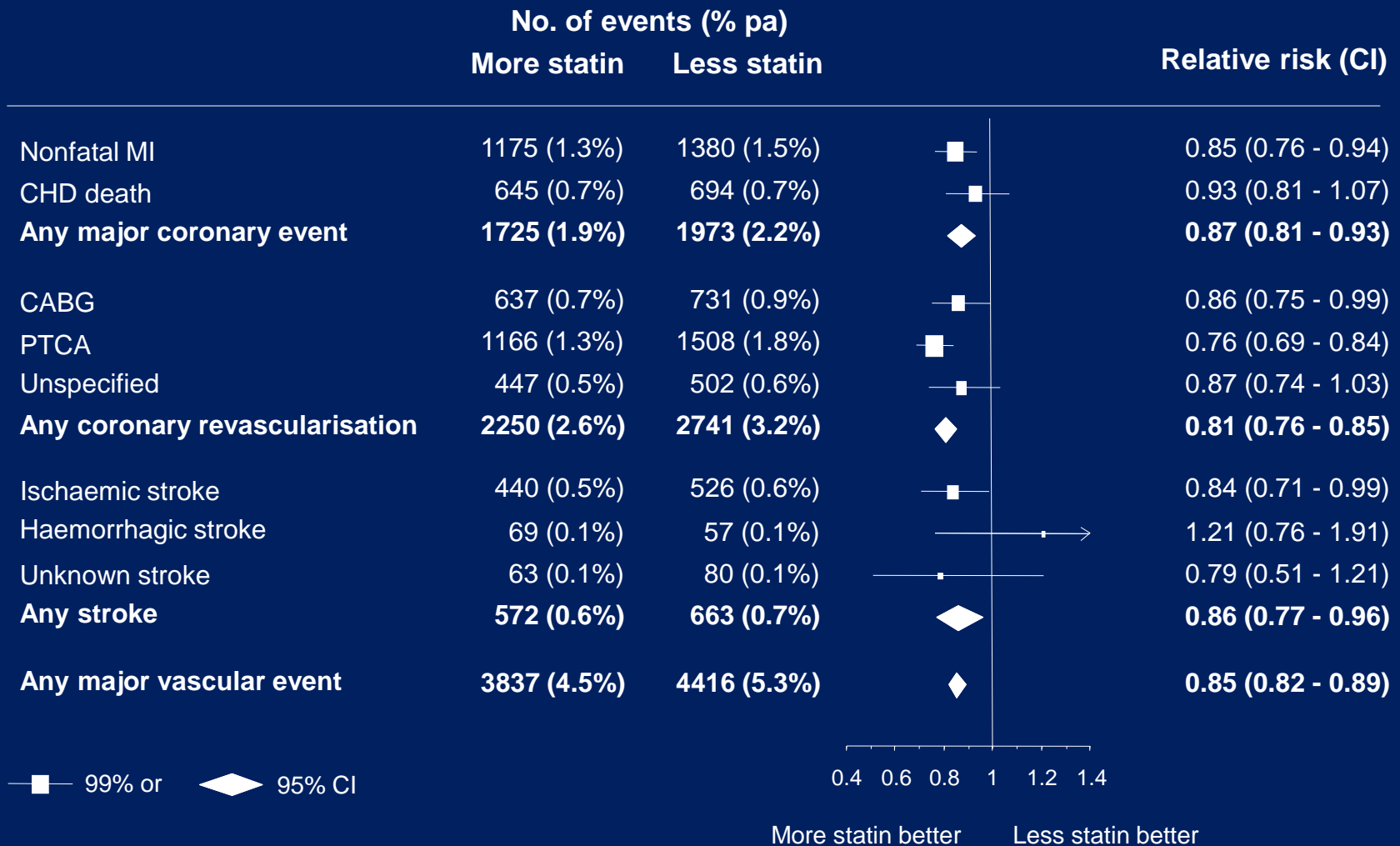
Second CTT cycle: additional trials of statin vs control

Study	Treatment comparison	N	Target population	Entry lipid criteria
MEGA	P 10-20 vs. usual care	8214	Primary prevention	TC 220-270 mg/dL
JUPITER	R 20 vs. placebo	17 802	Primary prevention (but CRP>2 mg/dL)	LDL-C <130 mg/dL, TG <500 mg/dL
4D	A 20 vs. placebo	1255	Type 2 DM + haemodialysis	LDL-C 80-190 mg/dL TG <1000 mg/dL
AURORA	R 10 vs. placebo	2773	Haemodialysis	None
ALLIANCE	A 10-80 (until LDL <80 mg/dL) vs. usual care	2442	Prior CHD	LDL-C 110-200 mg/dL on lipid lowering drugs, 130-250 mg/dL if not
ASPEN	A 10 vs. placebo	2410	Type 2 DM + CHD or risk factors	LDL-C <150, TG ≤445 mg/dL with CHD; LDL-C <159, TG ≤600 mg/dL without
GISSI-HF	R 10 vs. placebo	4574	CHF	None

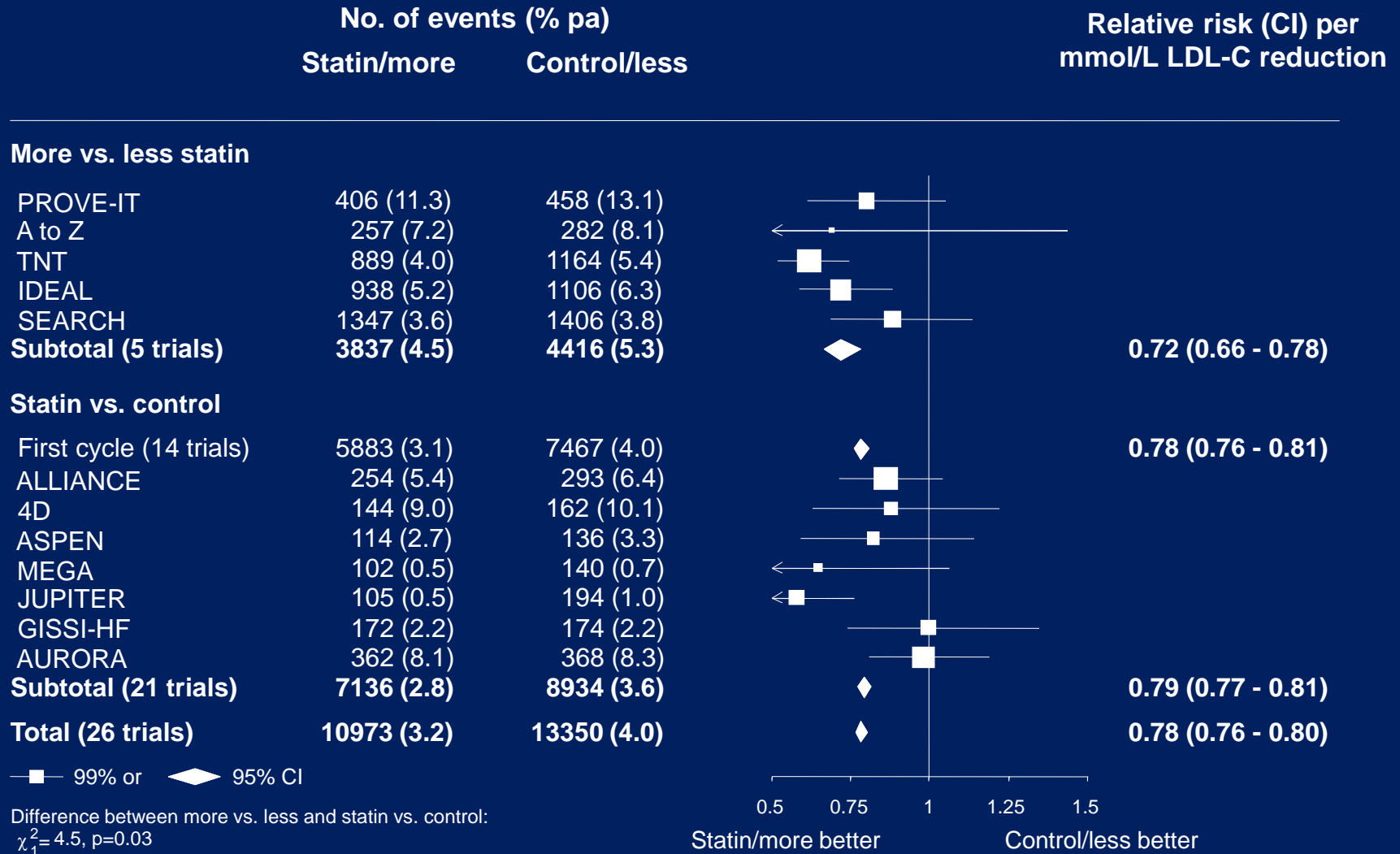
Proportional effects on MAJOR VASCULAR EVENTS unweighted for 1-year LDL-C differences



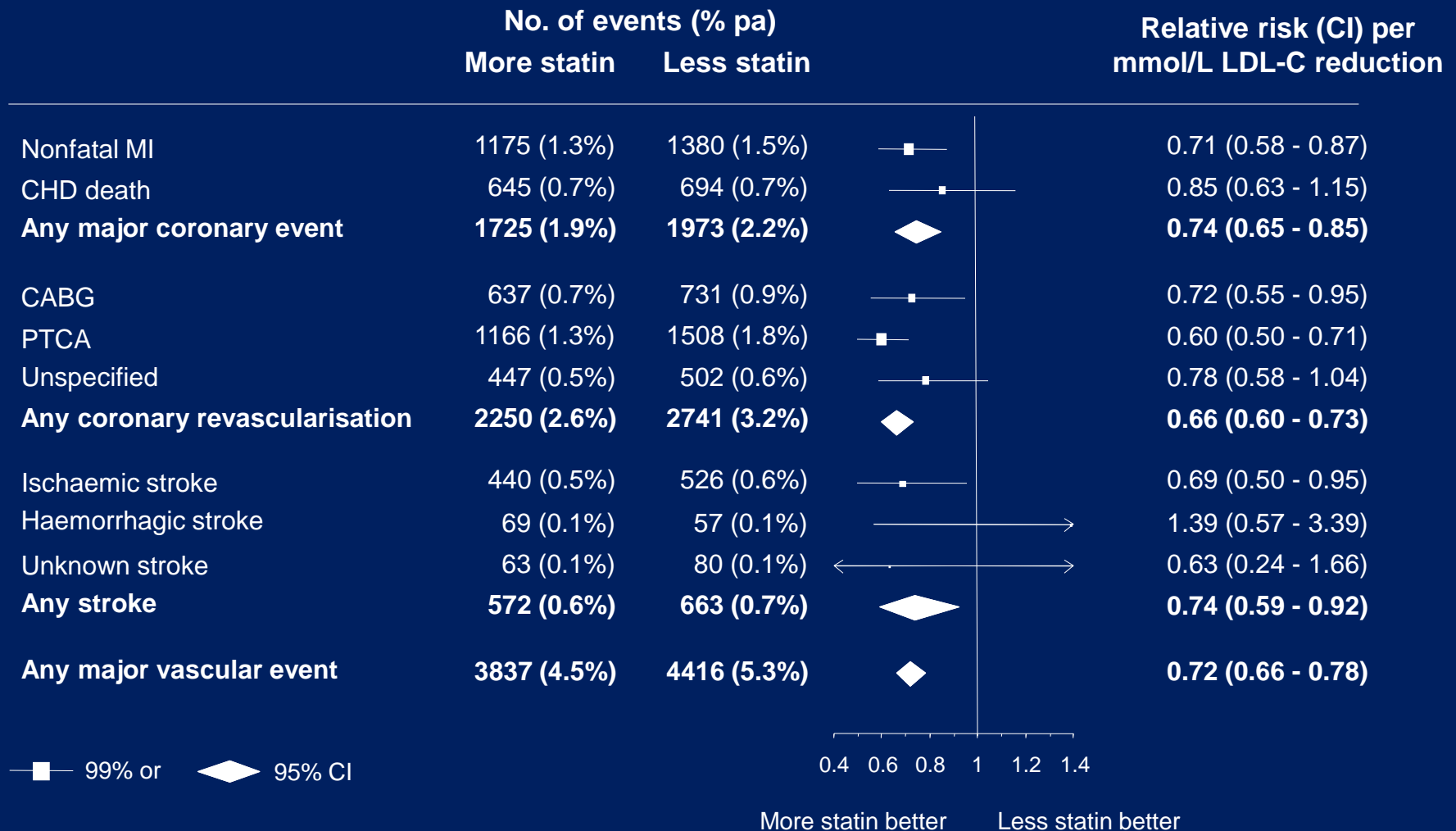
MORE VS LESS STATIN – Proportional effects on MAJOR VASCULAR EVENTS unweighted for 1-year LDL-C differences



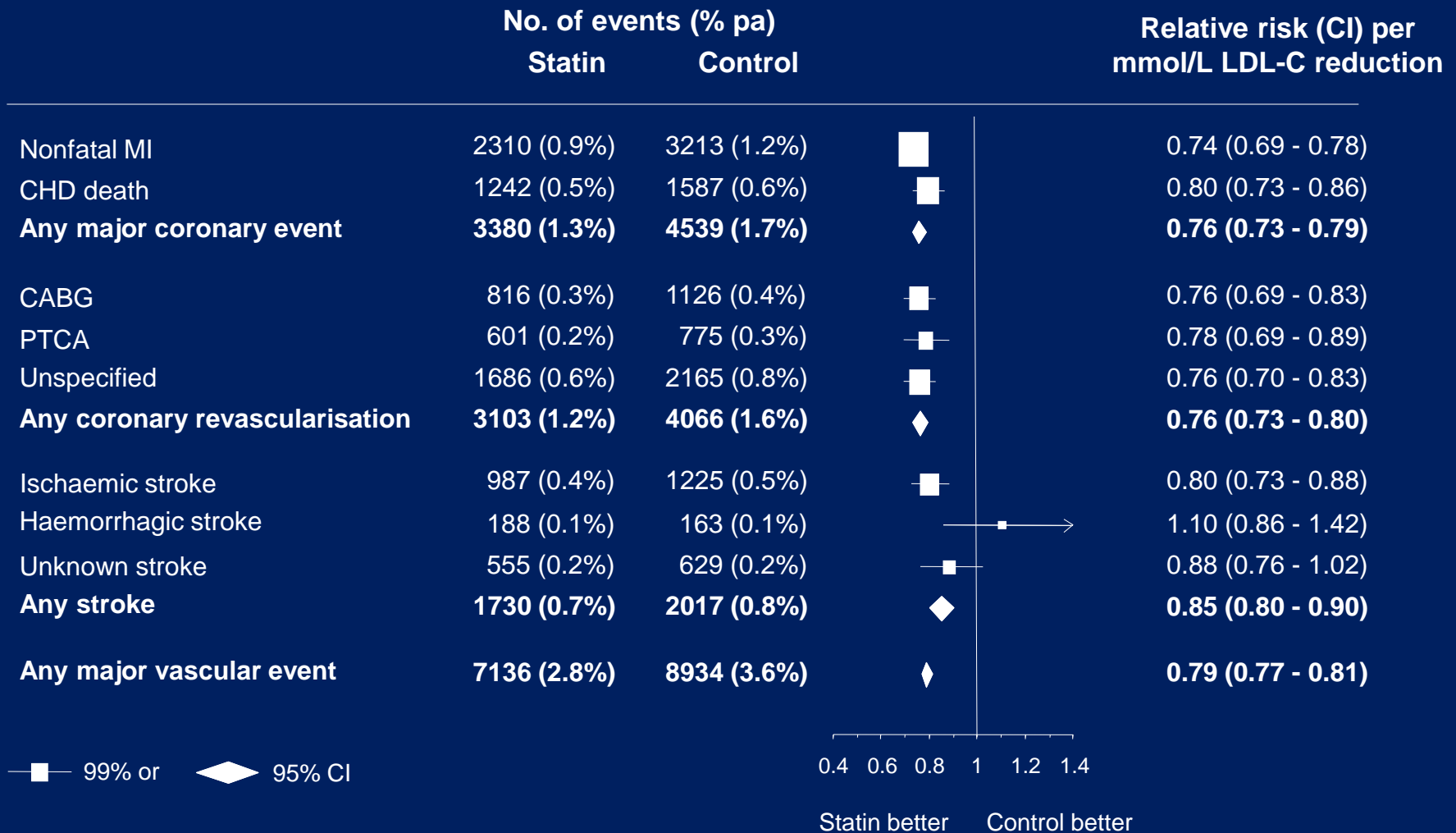
Proportional effects on MAJOR VASCULAR EVENTS per mmol/L LDL-C reduction



MORE VS LESS STATIN – Proportional effects on MAJOR VASCULAR EVENTS per mmol/L LDL-C reduction

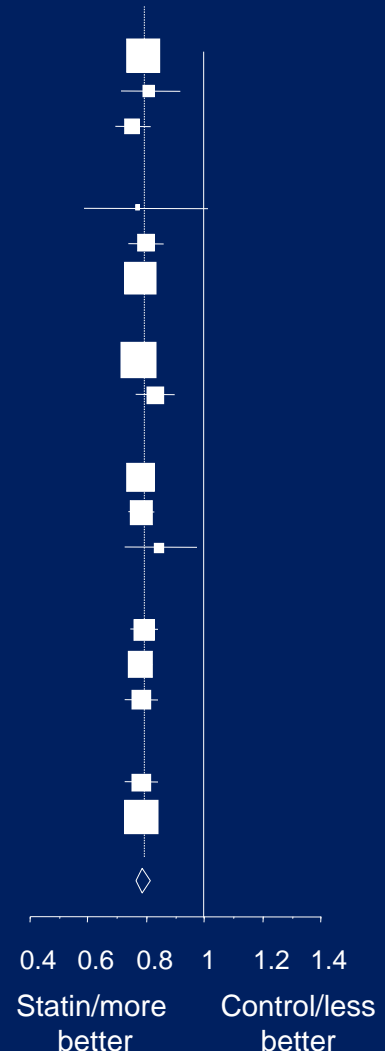


STATIN VS CONTROL – Proportional effects on MAJOR VASCULAR EVENTS per mmol/L LDL-C reduction

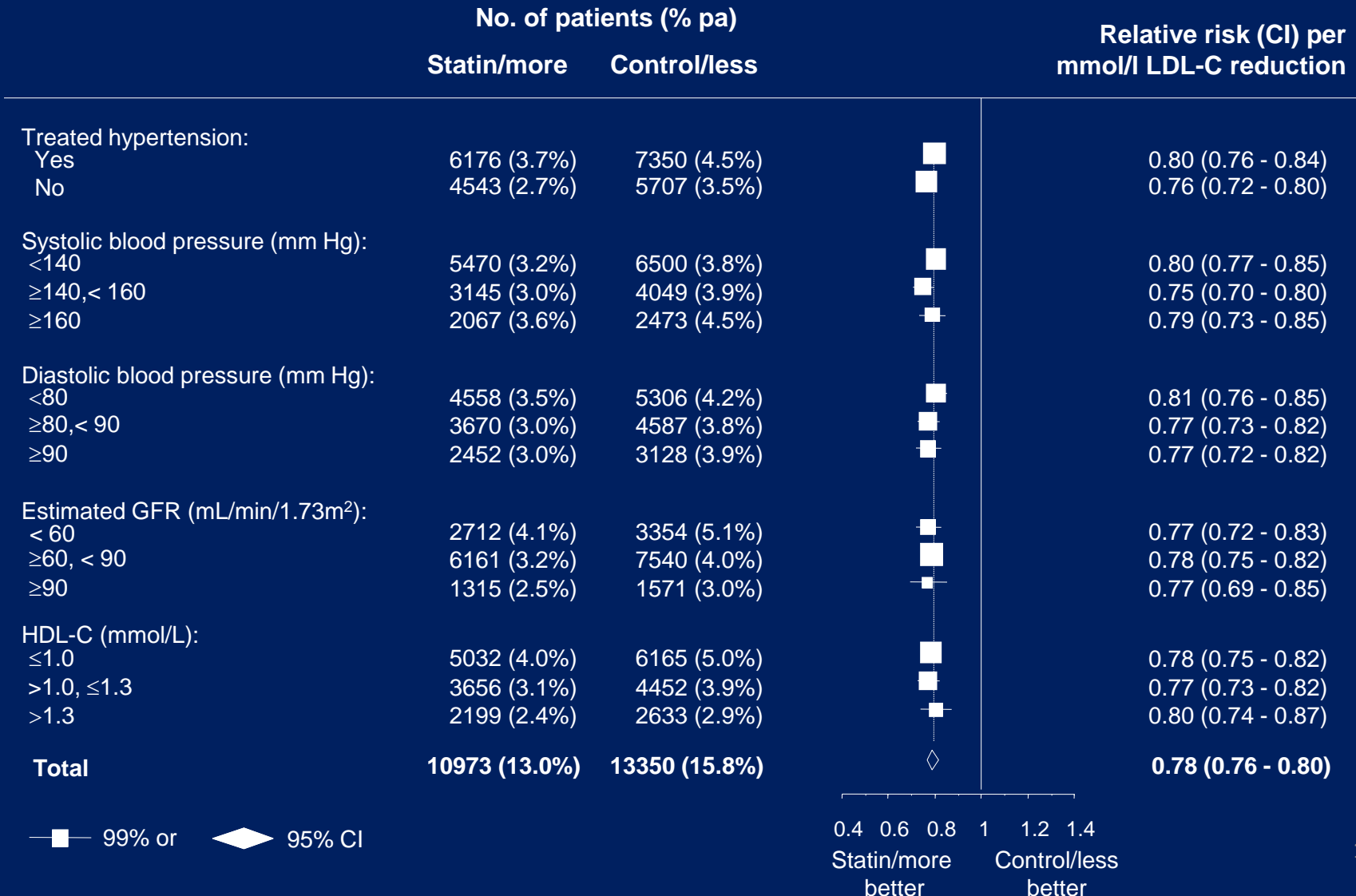


Proportional effects on MAJOR VASCULAR EVENTS per mmol/L LDL-C reduction, by baseline prognostic factors

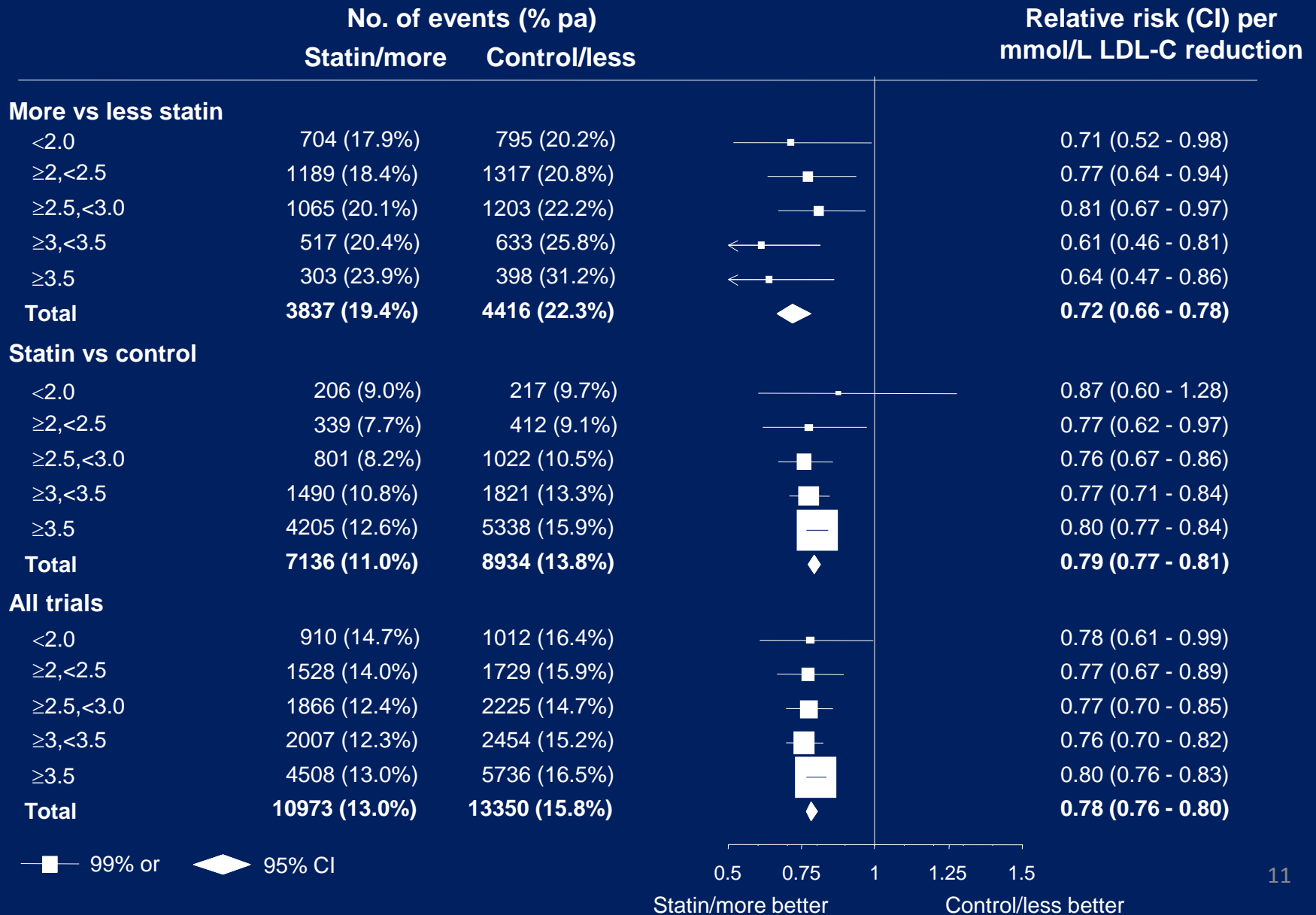
	No. of patients (% pa)		Relative risk (CI) per mmol/L LDL-C reduction
	Statin/more	Control/less	
Previous coronary disease:			
CHD	8395 (4.5%)	10123 (5.6%)	0.79 (0.76 - 0.82)
Non-CHD vascular	674 (3.1%)	802 (3.7%)	0.81 (0.71 - 0.92)
None	1904 (1.4%)	2425 (1.8%)	0.75 (0.69 - 0.82)
Diabetes:			
Type 1 diabetes	145 (4.5%)	192 (6.0%)	0.77 (0.58 - 1.01)
Type 2 diabetes	2494 (4.2%)	2920 (5.1%)	0.80 (0.74 - 0.86)
No diabetes	8272 (3.2%)	10163 (4.0%)	0.78 (0.75 - 0.81)
Sex:			
Male	8712 (3.5%)	10725 (4.4%)	0.77 (0.74 - 0.80)
Female	2261 (2.5%)	2625 (2.9%)	0.83 (0.76 - 0.90)
Age (years)			
≤65	6056 (2.9%)	7455 (3.6%)	0.78 (0.75 - 0.82)
>65, ≤75	4032 (3.7%)	4908 (4.6%)	0.78 (0.74 - 0.83)
>75	885 (4.8%)	987 (5.4%)	0.84 (0.73 - 0.97)
Body mass index (kg/m ²):			
<25	3030 (3.0%)	3688 (3.7%)	0.79 (0.74 - 0.84)
≥25, < 30	5033 (3.3%)	6125 (4.1%)	0.78 (0.74 - 0.82)
≥30	2732 (3.3%)	3331 (4.1%)	0.78 (0.73 - 0.84)
Smoking status:			
Current smokers	2268 (3.6%)	2896 (4.7%)	0.78 (0.73 - 0.84)
Non-smokers	8703 (3.1%)	10452 (3.9%)	0.78 (0.75 - 0.82)
Total	10973 (13.0%)	13350 (15.8%)	0.78 (0.76 - 0.80)



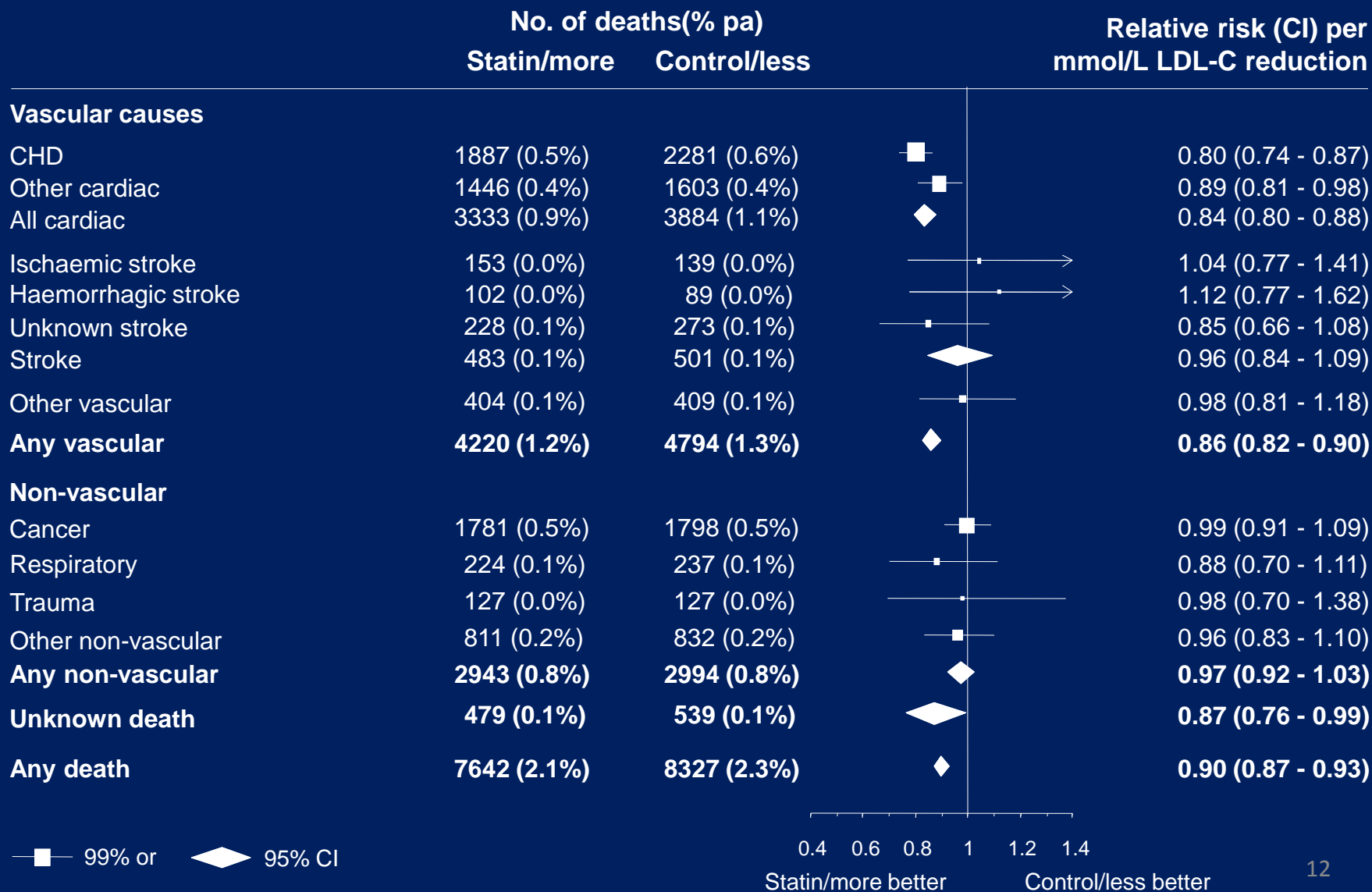
Proportional effects on MAJOR VASCULAR EVENTS per mmol/L LDL-C reduction, by baseline prognostic factors



Proportional effects on MAJOR VASCULAR EVENTS per mmol/L LDL-C reduction, by baseline LDL-C



Proportional effects on CAUSE-SPECIFIC MORTALITY per mmol/L LDL-C reduction



Proportional effects on SITE SPECIFIC CANCER per mmol/L LDL-C reduction

